

Glade Court

Uxbridge • Middlesex • UB8 1PJ
PCM: £1,700 PCM



coopers
est 1986

Luxury Living for the Modern Lifestyle. This TWO BEDROOM, TWO BATHROOM Apartment is situated in the heart of Uxbridge town centre and close to the high street. Bars, Restaurants and shopping facilities on your doorstep.

Accommodation; Two double bedrooms (master with ensuite bathroom), Further family bathroom, Lounge, Fully fitted kitchen with appliances. Benefits; Gas central heating, Double glazing, Residents parking, Entry-phone system. FURNISHED

Two double bedrooms

Walking distance to Uxbridge town centre

Great transport links

Close to Brunel University

Great local amenities

Close distance to Heathrow Airport

Easy access to M40

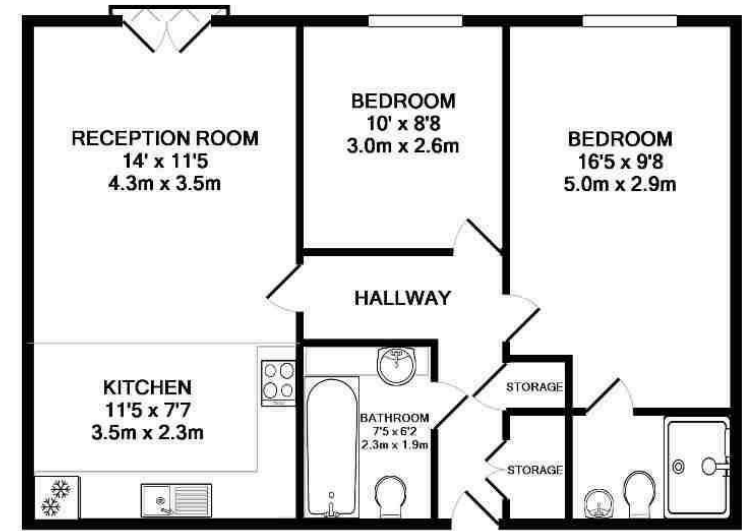
Ample storage space

Allocated parking

Council Tax Band D

Available Date

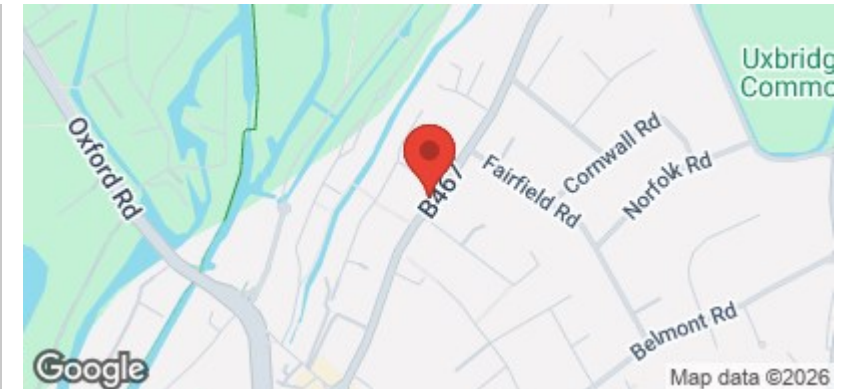
20th April 2026



TOTAL APPROX. FLOOR AREA 628 SQ.FT. (58.3 SQ.M.)

Whilst every attempt has been made to ensure the accuracy of the floor plan contained here, measurements of doors, windows, rooms and any other items are approximate and no responsibility is taken for any error, omission, or mis-statement. This plan is for illustrative purposes only and should be used as such by any prospective purchaser. The services, systems and appliances shown have not been tested and no guarantee as to their operability or efficiency can be given.

Made with Metropix ©2017.



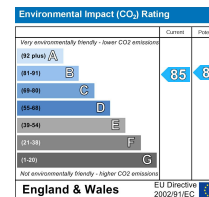
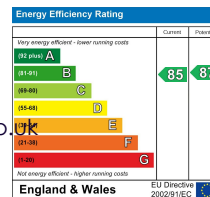
coopers
est 1986

01895 230 103

109 Hillingdon Hill, Hillingdon Village,
Middlesex, UB10 0JQ

propertymanagement@coopersresidential.co.uk

CoopersResidential.co.uk



Important Notice: These particulars, whilst believed to be accurate are set out as a general outline only for guidance and do not constitute any part of an offer or contract. Intending purchasers should not rely on them as statements or representation of fact, but must satisfy themselves by inspection or otherwise has the authority to make or give any representation or warranty in respect of the property.